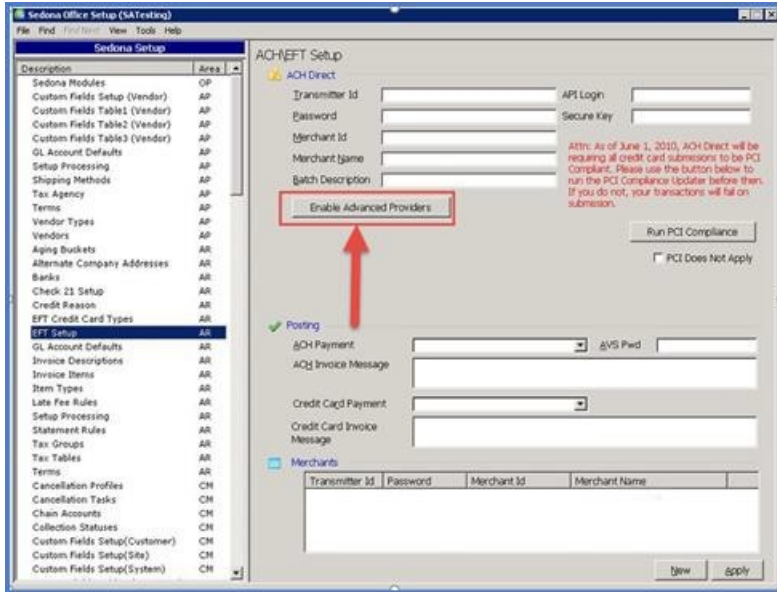


# Payment Method Tokenizing Procedure for SedonaOffice

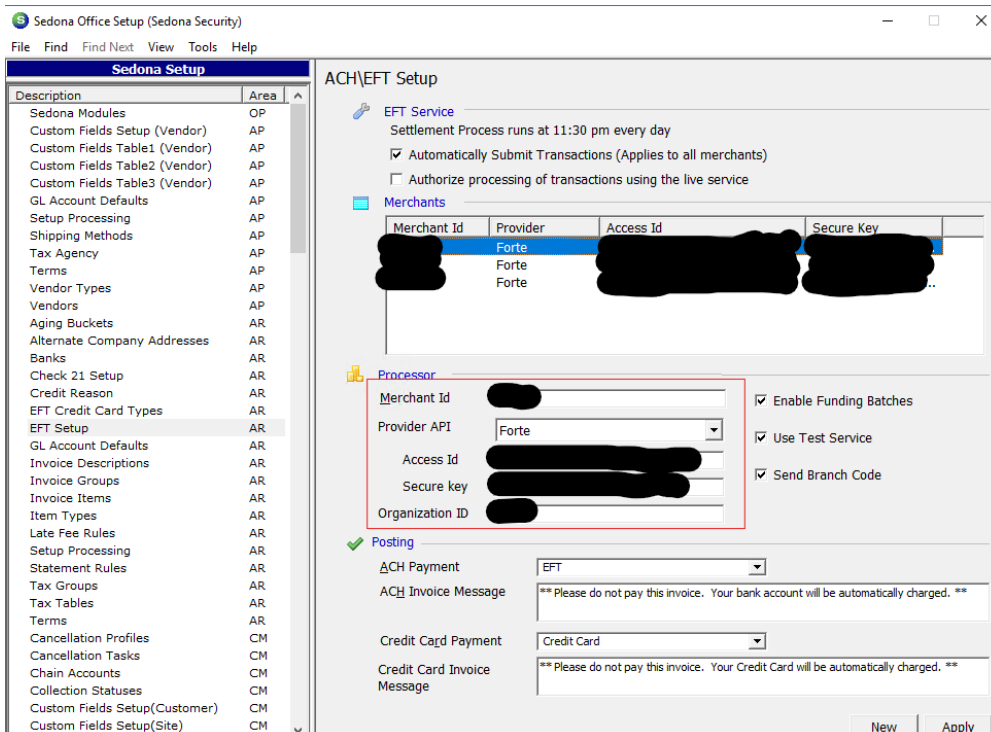
Last Modified on 09/13/2024 6:01 pm EDT

First, the application files will be updated from version 5.7 to version 6+. This will be coordinated with the Support representative, IT, and the customer.

On the EFT Setup screen, enable Advanced Providers.



Once Advanced Providers is enabled, the API information will be filled out in the squared section of EFT Setup.



Open SSMS and complete the following:

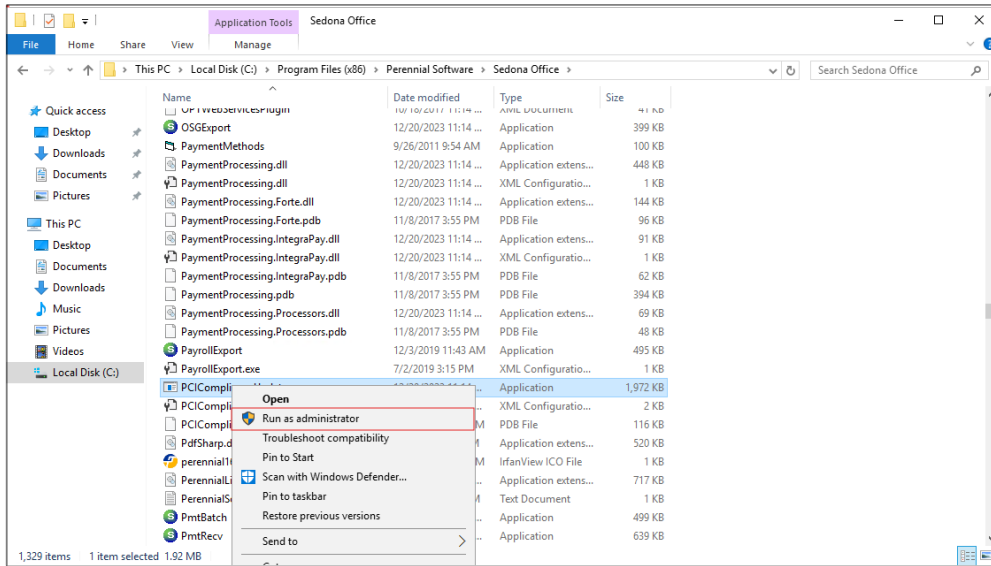
```
select * into ar_customer_cc_updatebackup from ar_customer_cc
```

```
select * into ar_customer_bank_updatebackup from ar_customer_bank
```

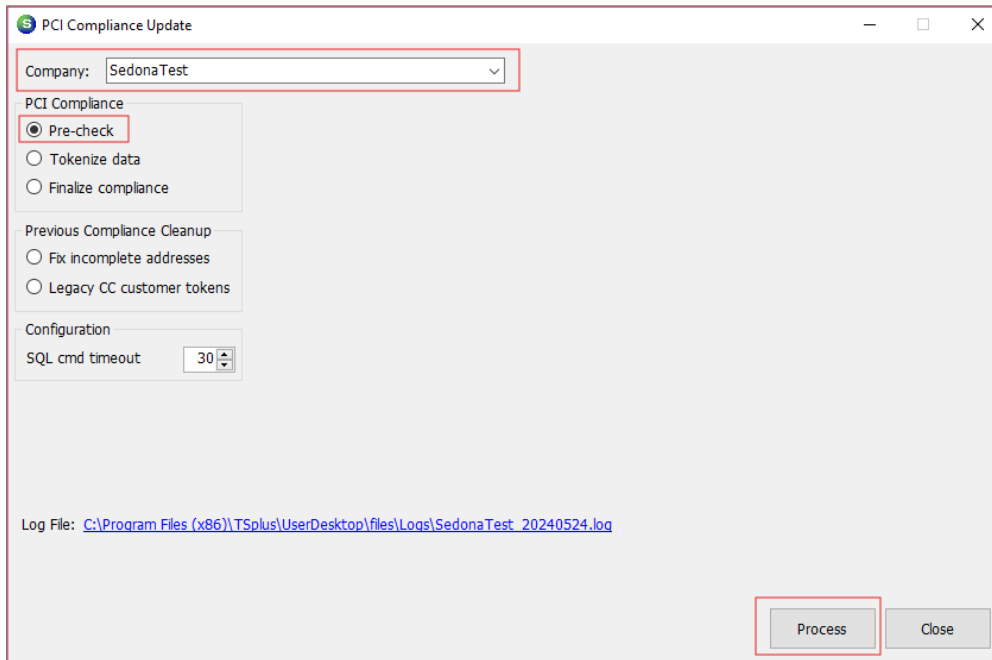
```
select * into ar_bank_updatebackup from ar_bank
```

These are in addition to the backup tables that the utility creates during the Pre-check.

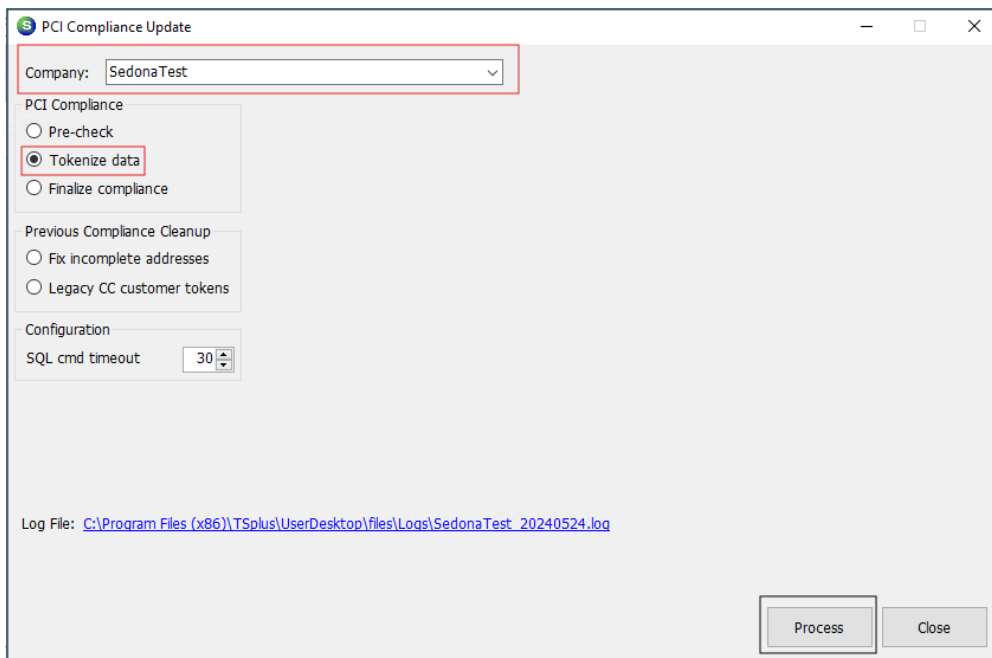
Once the backup tables have been created, navigate to the file structure to run the PCI Compliance utility as Admin.



Run the Pre-check. This may reveal aberrant data that needs to be worked through. Such as, bad routing numbers, older transactions that were not submitted, or expired cards. The data is investigated prior to the tokenization process, however, if there's data that needs the customer's input to correct during the tokenization process, they will be contacted for resolution.



Tokenize the records.



Mark as compliant.

PCI Compliance Update

Company: SedonaTest

PCI Compliance

- Pre-check
- Tokenize data
- Finalize compliance

Previous Compliance Cleanup

- Fix incomplete addresses
- Legacy CC customer tokens

Configuration

SQL cmd timeout: 30

Log File: [C:\Program Files \(x86\)\TSplus\UserDesktop\files\Logs\SedonaTest\\_20240524.log](C:\Program Files (x86)\TSplus\UserDesktop\files\Logs\SedonaTest_20240524.log)

Process Close