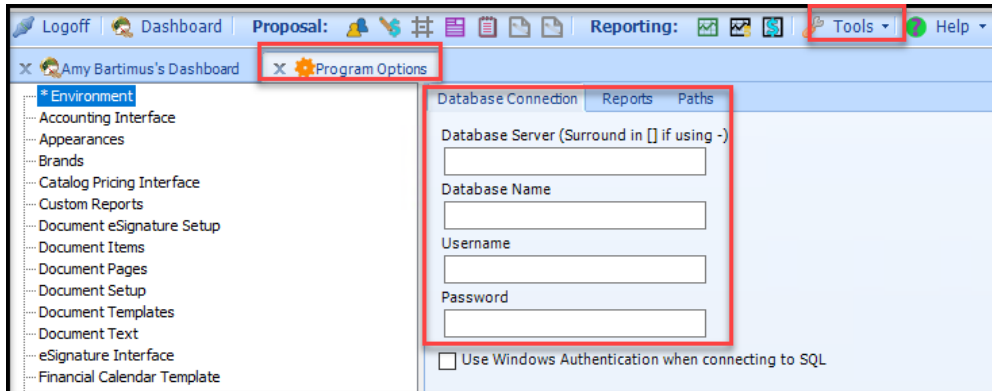


How to Set Up the Integration between SedonaOffice and WeSuite

Last Modified on 11/05/2024 5:49 pm EST

WeSuite

1. Go Tools and Program Options.
2. Enter the information for each field. This information comes from the Sedona SQL Server.



Sedona Office

1. Go to Tools and select WeSuite Setup.
2. Enter the information in each field that is entered in the WeSuite Setup.
3. Test Connection.
4. Save.

